



Lacey Drive

Edgware

Asking price £600,000

Davidson Frost-Wellings are delighted to showcase this beautiful modern three-bedroom, two-bathroom apartment situated on the fourth floor with balconies providing panoramic views. Situated only a ten-minute walk from Stanmore Underground Station and close to the shops and restaurants of Stanmore Broadway.

The impressive tiled communal hall has a secure entry phone with lift and the apartment also benefits from secure underground parking for one car and access to the well-maintained communal gardens.

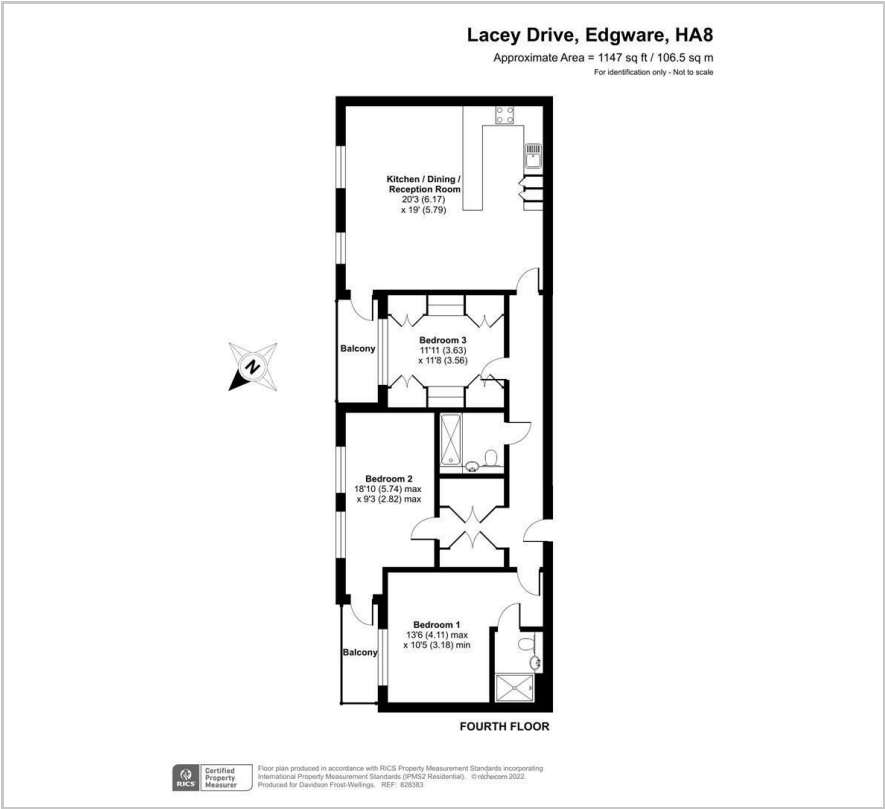
Leasehold of approximately 991 years remaining.
Ground Rent of £520 per year.
Service Charge of £2,700 per year.
Barnet Council Tax Band F.

Viewing

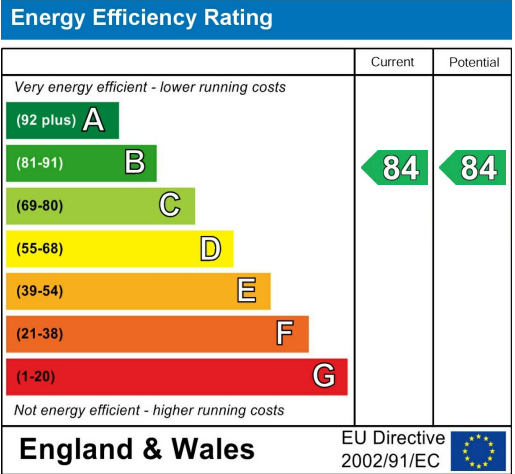
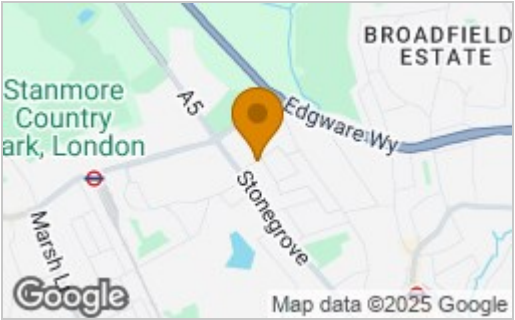
Please contact our Davidson Frost-Wellings Office on 020 8954 8806 if you wish to arrange a viewing appointment for this property or require further information.

- Three bedrooms
- Two bathrooms
- Fourth floor with lift
- Allocated parking
- Two balconies
- Master Bedroom With En Suite

Floor Plan



Area Map



These particulars, whilst believed to be accurate are set out as a general outline only for guidance and do not constitute any part of an offer or contract. Intending purchasers should not rely on them as statements of representation of fact, but must satisfy themselves by inspection or otherwise as to their accuracy. No person in this firms employment has the authority to make or give any representation or warranty in respect of the property.